

LOCCA™

• • • • • • • • **SURE-TOUCH**

Do you know someone who would benefit from a LOCCA?

The Locca Sure-Touch is a system designed to:

- Enable the elderly or disabled to remain in their homes for longer
- Ensure they feel confident entering and leaving their properties at all times
- Allow them the comfort of letting in friends and family without leaving their seat

The New Locca Sure-Touch Offers the following features:

- Sleek, ergonomic design
- Range up to 50 metres
- Pre-programmed remotes
- High quality look and feel
- Durable and reliable



The Locca Receiver

The Locca System is controlled by a receiver that is discreet, secure and easy to use.

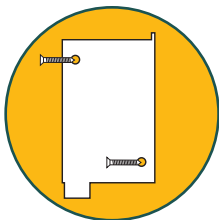
The Release Mechanism

The Locca system works with electric strikes, magnetic locks and most other access control systems.



The system is affordable, secure, easy to use, and quick to install, offering the perfect solution to an everyday problem.

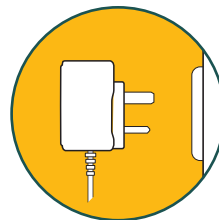
Installation: **THREE** easy steps



1. Attach mounting plate to the wall



2. Attach Locca to receiver plate



3. Plug in

The Locca System is currently stocked or installed by:

- Local Authorities (Housing services)
- ICES (Integrated Community Equipment Services)
- Housing Associations
- Businesses complying with DDA
- Sheltered Homes
- Care and Repair Schemes
- Private individuals at home
- Your local locksmith

DDI PHONE NO. 01905 777793
EMAIL: SALES@KEYSAFE.CO.UK
WWW.KEYSAFE.CO.UK



ACCESS CONTROL

made easy

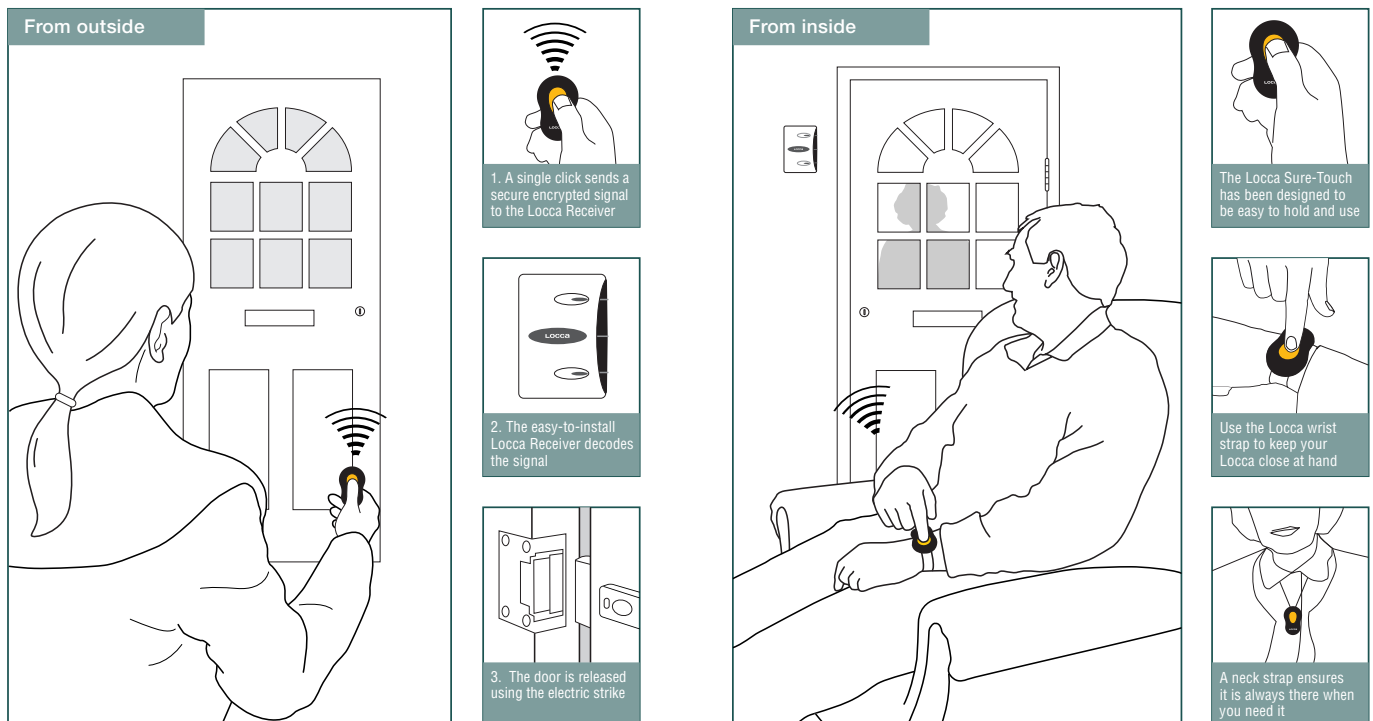
Locca Tech had designed a system specifically for the elderly or disabled, that allows the user to open their front door remotely at the touch of a button, from inside or outside their home.

How it works

At the touch of a button, you can now quickly and easily enter your home...

How it works

...or let friends and family into your home without having to leave your seat or bed.



Designed in association with Occupational Therapists, the system provides a simple solution to anyone who has difficulty using keys.

Sure-Touch features:

- ➔ Unlocks doors at the touch of a remote button (*similar to modern car remotes*)
- ➔ Yellow on black for easy recognition by visually impaired
- ➔ Installed in under 30 minutes (*fits to existing locks.*)
- ➔ Attachable wrist and neck strap
- ➔ Large low resistance button
- ➔ Very simple to use

Do you know anyone who:

- ➔ Has had trouble with their house keys?
- ➔ Has to let in visitors or carers?
- ➔ Would benefit from instant home access in case of emergency?
- ➔ Has limited vision and difficulty locating a keyhole?
- ➔ Has decreased mobility?